

## ProCurve Switch 1800 Series

The ProCurve Switch 1800 series consists of two Web-managed switches. The ProCurve Switch 1800-24G is a 22-port 10/100/1000 switch with 2 dual-personality ports for RJ-45 10/100/1000 or mini-GBIC fiber Gigabit connectivity. The ProCurve Switch 1800-8G is a small form factor, 8-port 10/100/1000 switch. The ProCurve Switch 1800 series enables increased network capabilities and control vs. unmanaged switches, with support for fundamental networking protocols such as trunking, VLANs, and traffic prioritization. Both switches are managed via an intuitive Web interface. The ProCurve Switch 1800 series is ideal for businesses making the transition from unmanaged connectivity to managed networks without added cost or complexity.



ProCurve Switch  
1800-24G (J9028A)



ProCurve Switch  
1800-8G (J9029A)

# ProCurve Switch 1800 Series

## Features and benefits

### Flexibility

- **Small form factor:** ideal for desktop use, and space-efficient for deployment flexibility (1800-8G)
- **Fanless design:** reduces noise and enables quiet operation, reducing distraction when deployed in open spaces (1800-8G)

### Manageability

- **Intuitive Web interface:** enables simple management via an easy-to-use Web browser interface for switch configuration, monitoring, and administration
- **Integration with ProCurve Manager:** enables discovery and mapping via ProCurve Manager, available as a free download from the Web
- **IEEE 802.1AB Link Layer Discovery Protocol (LLDP):** automated device discovery protocol for easy mapping by network management applications

### Ease of use

- **Comprehensive LED display with per-port indicators:** provides an at-a-glance view of status, activity, speed, and full-duplex operation
- **ProCurve/IEEE Auto-MDIX:** automatically adjusts for straight-through or crossover cables on all 10/100/1000 ports

### Security

- **Management password:** provides security so that only authorized access to the Web browser interface is allowed

### Layer 2 switching

- **VLAN support and tagging:** support up to 64 port-based VLANs and dynamic configuration of IEEE 802.1Q VLAN tagging, providing security between workgroups

### Resiliency and high availability

- **802.3ad Link Aggregation Control Protocol (LACP):** provides link-level redundancy with support for up to 4 trunks on the ProCurve Switch 1800-8G and 12 trunks on the ProCurve Switch 1800-24G, each with up to 8 links (ports) per trunk

### Quality of Service (QoS)

- **IEEE 802.1p prioritization:** delivers data to devices based on the priority and type of traffic
- **Broadcast control:** allows limitation of broadcast traffic rate to cut down on unwanted broadcast traffic on the network

### Connectivity

- **Jumbo packet support:** supports up to 9,216 byte frame size to improve performance of large data transfers

### Monitor and diagnostics

- **Port mirroring:** enables traffic on a port to be simultaneously sent to a network analyzer for monitoring

### Industry-leading warranty

- **Lifetime warranty:** for as long as you own the product, with next-business-day advance replacement (available in most countries)

---

## Services

### ProCurve Switch 1800-24G

- 3-year, 4-hour onsite, 13x5 coverage for hardware (U4683E)
- 3-year, 4-hour onsite, 24x7 coverage for hardware

(U4835E)

- 3-year, 4-hour onsite, 24x7 coverage for hardware, 24x7 software phone support (U6321E)

### ProCurve Switch 1800-8G

- 3-year, 4-hour onsite, 13x5 coverage for hardware (UE256E)

# ProCurve Switch 1800 Series

- 3-year, 4-hour onsite, 24x7 coverage for hardware (UE257E)
- 3-year, 4-hour onsite, 24x7 coverage for hardware, 24x7 software phone support (UE258E)

# ProCurve Switch 1800 Series



## Specifications

	<b>ProCurve Switch 1800-24G (J9028A)</b>	<b>ProCurve Switch 1800-8G (J9029A)</b>
<b>Ports</b>	22 10/100/1000 ports (IEEE 802.3 Type 10Base-T, IEEE 802.3u Type 100Base-TX, IEEE 802.3ab 1000Base-T Gigabit Ethernet) 2 dual-personality ports - each port can be used as either an RJ-45 10/100/1000 port (IEEE 802.3 Type 10Base-T; IEEE 802.3u Type 100Base-TX; IEEE 802.3ab 1000Base-T Gigabit Ethernet) or an open mini-GBIC slot (for use with mini-GBIC transceivers)	8 10/100/1000 ports (IEEE 802.3 Type 10Base-T, IEEE 802.3u Type 100Base-TX, IEEE 802.3ab 1000Base-T Gigabit Ethernet)
<b>Physical characteristics</b>		
Dimensions	6.74(d) x 17.42(w) x 1.73(h) in. (17.12 x 44.25 x 4.39 cm) (1U height)	4.58(d) x 7.73(w) x 1.73(h) in. (11.63 x 19.63 x 4.39 cm) (1U height)
Weight	4.32 lb. (1.96 kg)	1.19 lb. (0.54 kg)
<b>Memory and processor</b>		
Packet buffer size	500 KB	144 KB
RAM/ROM capacity	2 MB	1 MB
Flash capacity	2 MB	1 MB
SDRAM	64 KB	64 KB
<b>Mounting</b>	Mounts in an EIA-standard 19 in. telco rack or equipment cabinet (hardware included); horizontal surface mounting only	Horizontal surface mounting only
<b>Performance</b>		
Latency	100 Mb <4.7 $\mu$ s (64-byte packets)	100 Mb <3.9 $\mu$ s (64-byte packets)
Latency	1000 Mb <3.0 $\mu$ s (64-byte packets)	1000 Mb <2.1 $\mu$ s (64-byte packets)
Throughput	Up to 35.7 million pps (64-byte packets)	Up to 11.9 million pps (64-byte packets)
Switching capacity	48 Gbps	16 Gbps
MAC address table size	8,000 entries	8,000 entries
<b>Environment</b>		
Operating temperature	27°F to 104°F (-2.8°C to 40°C)	23°F to 104°F (-5°C to 40°C)
Operating relative humidity	15% to 95% @ 104°F (40°C), non-condensing	15% to 95% @ 104°F (40°C), non-condensing
Non-operating/storage temperature	-40°F to 159°F (-40°C to 70.6°C)	-40°F to 159°F (-40°C to 70.6°C)
Non-operating/storage relative humidity	0% to 90% @ 149°F (65°C), non-condensing	0% to 90% @ 149°F (65°C), non-condensing
Altitude	up to 15,000 ft.(4.6 km)	up to 15,000 ft.(4.6 km)
Acoustic		up to 15,000 ft.(4.6 km) 0 dB No Fan
<b>Electrical characteristics</b>		
Maximum heat dissipation	205 BTU/hr ( 216.28 kJ/hr )	61 BTU/hr ( 64.36 kJ/hr )
Voltage	100-240 VAC	100-127 VAC/200-240 VAC
Current	1.2 A/0.6 A	1.0 A/0.8 A
Power consumption	24 W	18 W
Frequency	50/60 Hz	50/60 Hz

# ProCurve Switch 1800 Series

**Notes**

The exact input voltage and frequency rating are determined by the specific power adapter part number ordered. Please select the correct power adapter country option.

<b>Safety</b>	CSA 22.2 No. 60950; EN 60950/IEC 60950; UL 60950	CSA 22.2 No. 60950; EN 60950/IEC 60950; UL 60950
<b>Emissions</b>	FCC Rules Part 15, Subpart B Class A; EN55022; VCCI; ICES-003 (Canada)	FCC Rules Part 15, Subpart B Class A; EN55022; VCCI; ICES-003 (Canada)
<b>Immunity</b>		
EN	EN55024	EN55024
ESD	EN61000-4-2	EN61000-4-2
Radiated	EN61000-4-3	EN61000-4-3
EFT/Burst	EN61000-4-4	EN61000-4-4
Surge	EN61000-4-5	EN61000-4-5
Conducted	EN61000-4-6	EN61000-4-6
Power frequency magnetic field	EN61000-4-8	EN61000-4-8
Voltage dips and interruptions	EN61000-4-11	EN61000-4-11
Harmonics	EN61000-3-2	EN61000-3-2
Flicker	EN61000-3-3	EN61000-3-3
<b>Management</b>	ProCurve Manager; Web browser	ProCurve Manager; Web browser
<b>Standards and protocols</b>	IEEE 802.3x Flow Control; IEEE 802.3ad Link Aggregation Control Protocol; IEEE 802.1AB Link Layer Discovery Protocol; IEEE 802.1Q VLANs; IEEE 802.1p Priority; RFC1534 DHCP/BootP	IEEE 802.3x Flow Control; IEEE 802.3ad Link Aggregation Control Protocol; IEEE 802.1AB Link Layer Discovery Protocol; IEEE 802.1Q VLANs; IEEE 802.1p Priority; RFC1534 DHCP/BootP

**Notes**

Use only supported genuine ProCurve mini-GBICs with your switch.

# ProCurve Switch 1800 Series

## Accessories



### ProCurve Gigabit-LH-LC Mini-GBIC (J4860B)

with one 1000Base-LH port; designed for long-distance single-mode fiber connectivity

#### Ports

1 1000Base-LH port (no IEEE standard exists for 1550 nm optics)

Duplex: full

Connectors: LC

#### Physical characteristics

Dimensions: 2.167 (d) x 0.604 (w) x 0.463 (h) in. (5.5 x 1.53 x 1.18 cm)

Weight: 0.04 lb. (0.02 kg)

#### Cabling

Low metal content, single-mode fiber-optic, complying with ITU-T G.652 and ISO/IEC 793-2 Type B1

#### Maximum distance

70 km



### ProCurve Gigabit-LX-LC Mini-GBIC (J4859B)

with one 1000Base-LX port; designed for long-distance single-mode fiber connectivity, will support multimode fiber connectivity to limited distances

#### Ports

1 1000Base-LX port (IEEE 802.3z Type

1000Base-LX)

Duplex: full

Connectors: LC

#### Physical characteristics

Dimensions: 2.24 (d) x 0.54 (w) x 0.486 (h) in. (5.69 x 1.37 x 1.23 cm)

Weight: 0.04 lb. (0.02 kg)

#### Cabling

Either single mode or multimode

62.5/125  $\mu\text{m}$  or 50/125  $\mu\text{m}$  (core/cladding) diameter, graded-index, low metal content, multimode fiber optic, complying with ITU-T G.651 and ISO/IEC 793-2 Type A1b or A1a, respectively

Low metal content, single-mode fiber-optic, complying with ITU-T G.652 and ISO/IEC 793-2 Type B1

#### Maximum distance

10 km (single mode) or 550 m (multimode)



### ProCurve Gigabit-SX-LC Mini-GBIC (J4858B)

with one 1000Base-SX port; designed for short-distance (<550 m max.) multimode fiber connectivity

#### Ports

1 1000Base-SX port (IEEE 802.3z Type

1000Base-SX)

Duplex: full

Connectors: LC

#### Physical characteristics

Dimensions: 2.24 (d) x 0.54 (w) x 0.486 (h) in. (5.69 x 1.37 x 1.23 cm)

Weight: 0.04 lb. (0.02 kg)

#### Cabling

62.5/125  $\mu\text{m}$  or 50/125  $\mu\text{m}$  (core/cladding) diameter, graded-index, low metal content, multimode fiber optic, complying with ITU-T G.651 and ISO/IEC 793-2 Type A1b or A1a, respectively

#### Maximum distance

220 m (62.5  $\mu\text{m}$  core diameter, 160 MHz/km bandwidth)

275 m (62.5  $\mu\text{m}$  core diameter, 200 MHz/km bandwidth)

500 m (50  $\mu\text{m}$  core diameter, 400 MHz/km bandwidth)

550 m (50  $\mu\text{m}$  core diameter, 500 MHz/km bandwidth)

# ProCurve Switch 1800 Series



## ProCurve Manager 2.1 (-)

Windows-based network management for ProCurve switches

### System requirements

Minimum Processor: 2.0 GHz Intel Pentium or equivalent

Recommended Processor: 3.0 GHz Intel Pentium or equivalent

Minimum Memory: 512 MB RAM

Recommended Memory: 1 GB RAM

Minimum Disk Space: 5 GB

Recommended Disk Space: 10 GB

### Operating system

Microsoft Windows XP Professional (SP1 or greater), Microsoft Windows 2000 Server (SP4 or later), Microsoft Windows XP (SP1 or greater), Microsoft Windows 2003 Server

### Browsers

Microsoft Internet Explorer version 5.0 or later

### Features

Device auto-discovery

Topology and mapping

Intuitive Explorer-style interface

Usable troubleshooting data and alerts

Device configuration and management

E-mail/Pager alerts



## ProCurve Manager Plus 2.1 100-device limited version (J8778A)

PCM+ provides advanced device management for 100 ProCurve devices, including integration with OpenView's Network Node Manager product.

### System requirements

Minimum Processor: 2.0 GHz Intel Pentium or equivalent

Recommended Processor: 3.0 GHz Intel Pentium or equivalent

Minimum Memory: 512 MB RAM

Recommended Memory: 1 GB RAM

Minimum Disk Space: 5 GB

Recommended Disk Space: 10 GB

### Operating system

Microsoft Windows XP Professional (SP1 or greater), Microsoft Windows 2000 Server (SP4 or later), Microsoft Windows XP (SP1 or greater), Microsoft Windows 2003 Server

### Browsers

Microsoft Internet Explorer version 5.0 or later

### Supported platforms

HP OpenView Network Node Manager version 6.41 or 7.01 or 7.5

### Features

Device auto-discovery

Topology and mapping

Intuitive Explorer-style interface

Usable troubleshooting data and alerts

Device configuration and management

Customize and execute policies across groups

Enhanced network security features

Multiple device configuration management and archiving

Create and configure VLANs across the network

Traffic monitoring and analysis

Auto-configures traffic monitoring of inter-switch links

Software updates with dual flash image support

Modular design for add-in expansion

E-mail/Pager alerts

SNMP trap forwarding

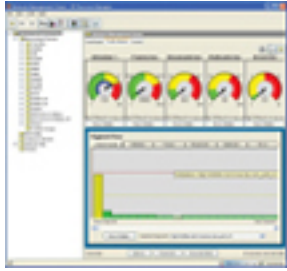
Granular event data via syslog support

OpenView NNM integration

### Additional requirements

Additional processing power may be necessary for extensive traffic monitoring

# ProCurve Switch 1800 Series



## ProCurve Manager Plus 2.1 upgrade to unlimited license (J8779A)

PCM+ 2.1 unlimited license removes the 100 device limit on PCM+ 2.1 100 device license for companies with large device counts.

### System requirements

Minimum Processor: 2.0 GHz Intel Pentium or equivalent  
Recommended Processor: 3.0 GHz Intel Pentium or equivalent  
Minimum Memory: 512 MB RAM  
Recommended Memory: 1 GB RAM  
Minimum Disk Space: 5 GB  
Recommended Disk Space: 10 GB

### Operating system

Microsoft Windows XP Professional, Microsoft Windows XP, Microsoft Windows 2003, Microsoft Windows XP Professional (SP1 or greater)

### Browsers

Microsoft Internet Explorer version 5.0 or later

### Supported platforms

HP OpenView Network Node Manager version 6.41 or 7.01 or 7.5

### Features

Device auto-discovery  
Topology and mapping

Intuitive Explorer-style interface  
Usable troubleshooting data and alerts  
Device configuration and management  
Customize and execute policies across groups  
Enhanced network security features  
Multiple device configuration management and archiving  
Create and configure VLANs across the network  
Traffic monitoring and analysis  
Auto-configures traffic monitoring of inter-switch links  
Software updates with dual flash image support  
Modular design for add-in expansion  
E-mail/Pager alerts  
SNMP trap forwarding  
Granular event data via syslog support  
OpenView NNM integration  
**Additional requirements**  
Additional processing power may be necessary for extensive traffic monitoring



## ProCurve Manager Plus 2.1 100-device upgrade (J8991A)

ProCurve Manager Plus 2.1 100 device Upgrade adds new PCM+ 2.1 functionality to previously purchased PCM+ 1.6 or PCM+ 1.5 releases.

### System requirements

Minimum Processor: 2.0 GHz Intel Pentium or equivalent  
Recommended Processor: 3.0 GHz Intel Pentium or equivalent  
Minimum Memory: 512 MB RAM  
Recommended Memory: 1 GB RAM  
Minimum Disk Space: 5 GB  
Recommended Disk Space: 10 GB

### Operating system

Microsoft Windows XP Professional, Microsoft Windows XP, Microsoft Windows 2003, Microsoft Windows XP Professional (SP1 or greater)

### Browsers

Microsoft Internet Explorer version 5.0 or later

### Supported platforms

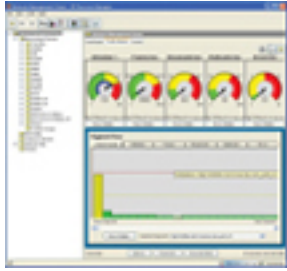
HP OpenView Network Node Manager version 6.41 or 7.01 or 7.5 (optional)

### Features

Device auto-discovery

Topology and mapping  
Intuitive Explorer-style interface  
Usable troubleshooting data and alerts  
Device configuration and management  
Customize and execute policies across groups  
Enhanced network security features  
Multiple device configuration management and archiving  
Create and configure VLANs across the network  
Traffic monitoring and analysis  
Auto-configures traffic monitoring of inter-switch links  
Software updates with dual flash image support  
Modular design for add-in expansion  
E-mail/Pager alerts  
SNMP trap forwarding  
Granular event data via syslog support  
OpenView NNM integration

# ProCurve Switch 1800 Series



**ProCurve Manager Plus 2.1 unlimited license (J9009A)** PCM+ 2.1 unlimited license provides a PCM+ license that does not limit the number of devices managed (It does NOT require the 100 device license).

## System requirements

Minimum Processor: 2.0 GHz Intel Pentium or equivalent

Recommended Processor: 3.0 GHz Intel Pentium or equivalent

Minimum Memory: 512 MB RAM

Recommended Memory: 1 GB RAM

Minimum Disk Space: 5 GB

Recommended Disk Space: 10 GB

## Operating system

Microsoft Windows XP Professional, Microsoft Windows XP, Microsoft Windows 2003, Microsoft Windows XP Professional (SP1 or greater)

## Browsers

Microsoft Internet Explorer version 5.0 or later

## Supported platforms

HP OpenView Network Node Manager version 6.41 or 7.01 or 7.5

## RADIUS server support

Microsoft IAS

## Features

Device auto-discovery

Topology and mapping

Intuitive Explorer-style interface

Usable troubleshooting data and alerts

Device configuration and management

Customize and execute policies across groups

Enhanced network security features

Multiple device configuration management and archiving

Create and configure VLANs across the network

Traffic monitoring and analysis

Auto-configures traffic monitoring of inter-switch links

Software updates with dual flash image support

Modular design for add-in expansion

E-mail/Pager alerts

SNMP trap forwarding

Granular event data via syslog support

OpenView NNM integration

## Additional requirements

Additional processing power may be necessary for extensive traffic monitoring

© 2006 Hewlett-Packard Development Company, L.P. The information contained herein is subject to change without notice. The only warranties for HP products and services are set forth in the express warranty statements accompanying such products and services. Nothing herein should be construed as constituting an additional warranty. HP shall not be liable for technical or editorial errors or omissions contained herein.

10/06/06

To learn more, visit [www.procurve.com](http://www.procurve.com)  
Information is subject to change without notice

