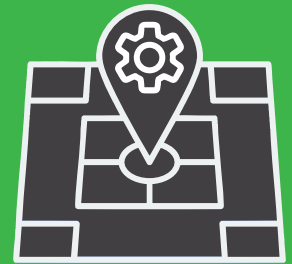


Best Practices for Switch Placement



A well-placed switch can save hours of troubleshooting down the line. Good positioning not only improves performance and airflow but also makes future maintenance faster and safer. Use this quick checklist to get it right the first time.

BEFORE YOU START

- ☐ Read the manufacturer's placement and clearance guidelines.
- ☐ Confirm the installation location is secure, accessible, and has power.

DURING INSTALLATION

- ☐ Mount the switch where you can easily reach ports and indicators.
- ☐ Leave clear airflow space at the front and back, no blocked vents.
- ☐ Keep away from direct sunlight, heaters, or HVAC vents.
- ☐ Route cables neatly and secure them with ties or trays.
- ☐ Label all cables clearly for future maintenance.
- ☐ Avoid cable strain. Check there is slack without loops or tangles.
- ☐ If in a public/shared area, install in a lockable cabinet or rack.
- ☐ For harsh environments, use industrial-rated enclosures.

AFTER INSTALLATION

- ☐ Test all ports and connections.
- ☐ Check temperature and airflow with equipment running.
- ☐ Ensure there is room for future switch expansion and extra cabling.